



# PURITAS

TEMPERED GLASS COVER MID-TOWER CASE WITH ENHANCED COOLING



PURITAS IS A CASE FOR THE VALIANT. FOR THOSE WHO WANT A BUILD THAT IS TRULY THEIRS. FOR THE CREATORS. FOR THE MODDING HEROES. FOR THE SERIOUS PC BUILDERS. IT IS A CASE FOR THOSE WHO WANT TO PUT THEIR SKILLS TO THE TEST. FULLY TRANSPARENT AND WITH PLENTY OF SPACE FOR HIGH-END COMPONENTS, PURITAS' LIMITS ARE ONLY YOUR OWN.

### PURE TEMPERED GLASS

Four tempered glass covers create a black mirrored box that allows internal lighting to go out in a semi-transparent manner. This can both be used as-is, which will result in a beautiful case with a reflective effect, or in combination with internal lighting to create unique effects that will amaze you and your friends.

### SUPERIOR GAMING SPECS

We built Puritas not only to be a beautiful case but also to be able to house a truly powerful computer. This shows in its excellent support for high-end gaming components. With seven expansion slots, Puritas allows you to install up to three 425mm long graphics cards. It also has dedicated space for storage: two 3.5" bays and four 2.5" bays give you space for all the SDDs and HDDs you need.

### THREE AMAZING LIGHT RINGS

Puritas comes with 3 COUGAR Vortex LED fans that, apart from including the latest technology in fan design, sport a unique tri-directional (inward-forward-outward) light circle, visible from a 180° degree angle. With 33 LEDs per fan, these fans are also brighter than the average backlit fan.

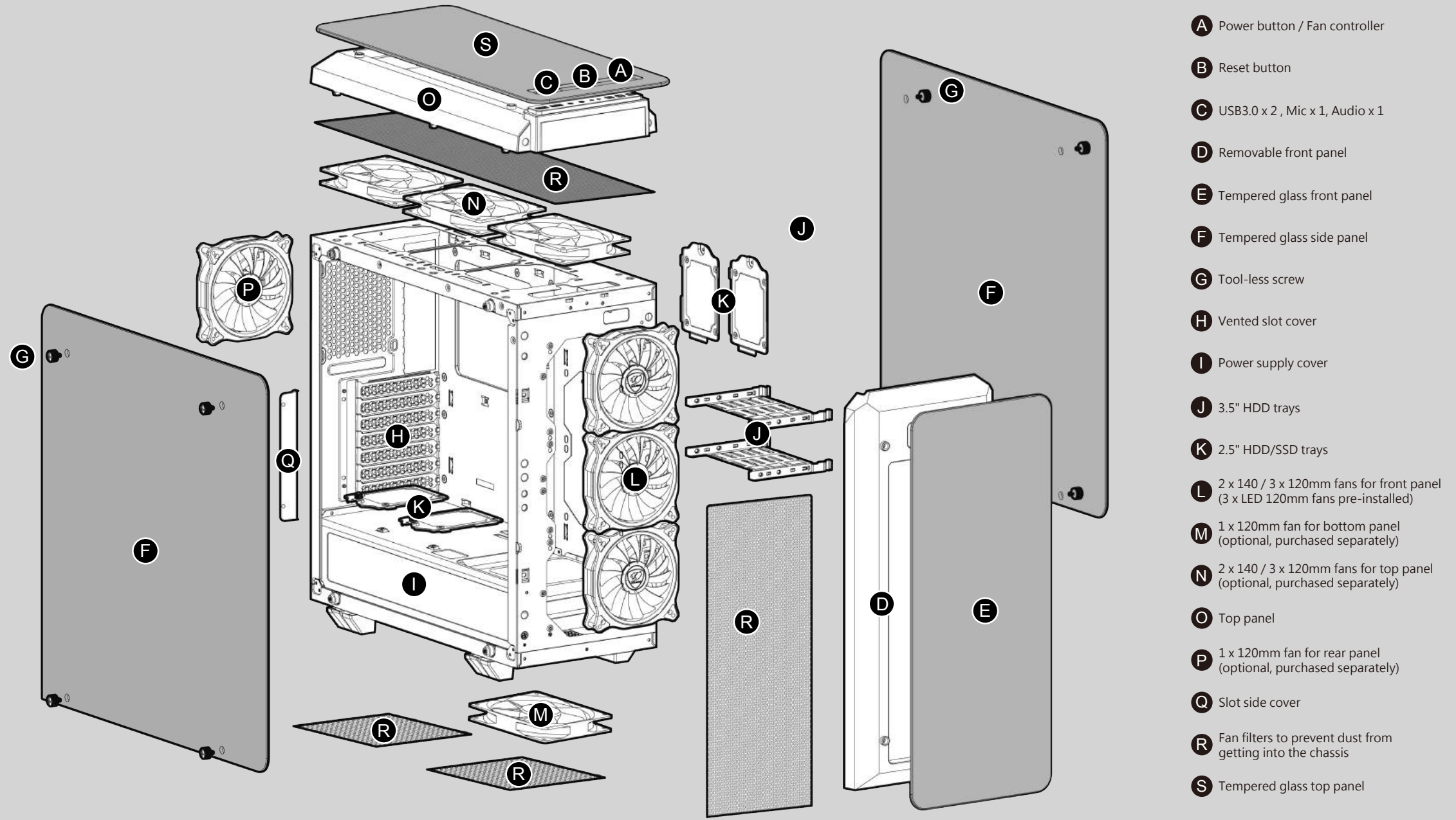
### POWERFUL COOLING

To run the latest games, you need potent components that generate lots of heat; Puritas allows you to enjoy gaming without worrying about overheating thanks to its fantastic cooling support. With the possibility of installing up to five water cooling radiators and ten fans, you will have greater leeway in designing the right solution to keep your computer well cooled!

Case Type	Middle Tower
Motherboard Type	Mini ITX / Micro ATX / ATX
Dimension	218 (W) x 520 (H) x 490 (D)mm
Case Drive Bays	3.5" : 2 2.5" : 4
I/O Panel	USB3.0 x 2 , Mic x 1 , Audio x 1 , Fan Controller
Cooling Fan Support	Front : 120mm x 3 (pre-installed) Top : 120mm x 3 Right Side : 120mm x 2 Rear : 120mm x 1 Bottom : 120mm x 1
Water Cooling Radiator Support	Front : 360mm / 240mm / 120mm Top : 360mm / 240mm / 120mm Right Side : 240/120mm Rear : 120mm Bottom : 120mm
Expansion Slots	7
Max. Graphic Card Length	425mm
Max. CPU Cooler Height	160mm
PSU	Standard ATX PS2
Cable Management	Yes
Fan Speed Control	Yes

The specification maybe varies depending on the country or region

## Assembly Drawing



- A** Power button / Fan controller
- B** Reset button
- C** USB3.0 x 2 , Mic x 1, Audio x 1
- D** Removable front panel
- E** Tempered glass front panel
- F** Tempered glass side panel
- G** Tool-less screw
- H** Vented slot cover
- I** Power supply cover
- J** 3.5" HDD trays
- K** 2.5" HDD/SSD trays
- L** 2 x 140 / 3 x 120mm fans for front panel (3 x LED 120mm fans pre-installed)
- M** 1 x 120mm fan for bottom panel (optional, purchased separately)
- N** 2 x 140 / 3 x 120mm fans for top panel (optional, purchased separately)
- O** Top panel
- P** 1 x 120mm fan for rear panel (optional, purchased separately)
- Q** Slot side cover
- R** Fan filters to prevent dust from getting into the chassis
- S** Tempered glass top panel

### FEATURES

#### ENGLISH

- Four Tempered Glass Covers
- Up to Three 425mm Long Graphics Cards
- Four 2.5" SSD Bays and Two 3.5" HDD Bays
- Cool Cooling: 3 Vortex LED Fans Included, with 33 LED per Fan!
- Bis zu fünf Water Cooling Radiators and Ten Fans
- HDD/SSD Trays Located Behind the Motherboard Tray: No Airflow Obstruction!

#### DEUTSCH

- Vier Abdeckungen aus gehärtetem Glas
- Bis zu drei 425 mm lange Grafikkarten
- Vier 2,5-Zoll-SSD-Schächte und zwei 3,5-Zoll-Festplattenschächte
- Coole Kühlung: 3 Vortex-LED-Lüfter inklusive, mit 33 LEDs pro Lüfter!
- Bis zu fünf Wasserkühlkörper und zehn Lüfter
- Festplatten-/SSD-Einsätze hinter dem Motherboard-Einsatz: Keine Behinderung des Luftstroms!

#### РУССКИЙ

- Закаленное стекло с четырех сторон
- До трех 425-миллиметровых графических карт
- Четыре 2,5" SSD отсека и два отсека для 3,5" HDD
- Яркое охлаждение: в комплекте 3 вихревых светодиодных вентилятора с 33 светодиодами на вентилятор!
- HDD / SSD лотки, расположенные за лотком материнской платы: нет препятствий для воздушного потока!

#### ESPAÑOL

- Cuatro Cubiertas de Vidrio Templado
- Hasta Tres Tarjetas Gráficas de 425mm de Longitud
- Cuatro Bandejas de 2.5" para SSD y Dos Bandejas de 3.5" para HDD
- Tres Ventiladores Vortex LED Incluidos, ¡con 33 LED por Ventilador!
- Hasta Cinco Radiadores y diez Ventiladores
- Bandejas para HDD/SSD ubicadas tras la de la Placa Madre: Mejor Ventilación

#### FRANÇAIS

- Conception élégante avec un capot gauche en verre trempé massif.
- Prend en charge les cartes graphiques jusqu'à 330 mm de longueur.
- Excellent refroidissement : prend en charge jusqu'à 10 ventilateurs et deux radiateur de 360 mm
- Ultra-large : 205 mm, installation facilitée, meilleur flux d'air
- Filtre à air supérieur magnétique + filtre à air inférieur détachable : facile à nettoyer!

#### PORTUGUÊS

- Quatro Tampas de Vidro Temperado
- Até Três Placas Gráficas de 425mm de Comprimento
- Quatro Compartimentos de SSD de 2,5" e Trjes de HDD de 3,5"
- Arrefecimento 3 Ventoinhas de LED Vortex Incluídas com 33 LED por Ventoinha!
- Até Quadro Radiadores de Refrigeração à água e dez Ventoinhas
- BAndejas de HDD/SSD Localizadas atrás da Bandeja de Placa Mãe: Sem Obstrução do Fluxo de Ar!

#### ITALIANO

- Quattro custodie in vetro temperato
- Fino a tre schede grafiche lunghe 425mm
- Quattro attacchi SSD da 2.5" e due attacchi HDD da 3.5"
- Raffreddamento istantaneo: 3 ventilatori Vortex a LED inclusi, con 33 LED per ventilatore!
- Fino a cinque radiatori per il raffreddamento dell'acqua ed dieci ventilatori
- I comparti HDD/SSD sono posizionati dietro il comparto della scheda madre: nessuna ostruzione dell'aria!

#### POLISH

- Cztery pokrywy ze szkła hartowanego.
- Maksymalnie trzy karty graficzne o długości 425 mm.
- Cztery wnęki 2,5" na SSD i dwie wnęki 3,5" na HDD.
- Efektowne chłodzenie: 3 wentylatory Vortex LED, po 33 diody LED na wentylator!
- Maksymalnie pięć radiatorów wodne i dziesięć wentylatorów.
- Szufłady na HDD/SSD za szufładą płyty głównej: swobodny obieg powietrza!

#### HUNGARIAN

- Négy edzett üvegből készült fedél
- Max. három 425 mm hosszú grafikus kártya
- Négy 2,5"-os SSD-bővítőhely és két 3,5"-os HDD-bővítőhely
- Hatékony hűtés: 3 Vortex LED ventilátor tartozik a termékhez, ventilátoronként 33 LED-dal!
- Max. öt vízhűtő radiator és tíz ventilátor
- HDD/SSD tálcá az alaplap tálcája mögött: semmi nem akadályozza a légmozgást!

#### 日本語

- 4面強化ガラスパネル採用 (フロント・トップ・左右両サイド)
- 最大3つの425mmグラフィックカードに対応できます
- 4つの2.5 インチSSDベイと2つの3.5インチHDDベイを備えています
- 優れた冷却性能: 3つのCougar Vortex LEDファンを標準搭載し、ファンあたり33個のLEDを搭載しています
- 最大10つのファンと5つの水冷ラジエーターを搭載可能です
- HDD / SSDトレイはマザーボードトレイの背面に設置 : エアフローが干渉しないようにしています簡単にクリーニングできます

#### 한국어

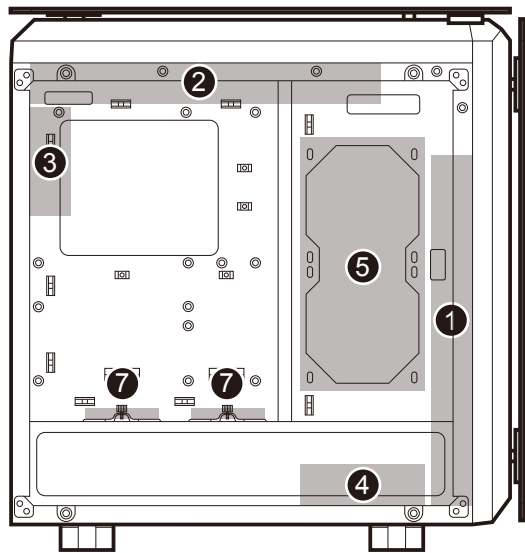
- 4 개의 강화 유리 커버
- 최대 3 개의 425mm 긴 그래픽 카드
- 4 개의 2.5 인치 SSD 베이와 2 개의 3.5 인치 HDD 베이
- 최대 5 개의 수냉식 라디에이터 및 10 개의 팬
- 마더 보드 트레이 뒤에 위치한 HDD / SSD 트레이 : 공기 흐름 장애 없음

#### 中文

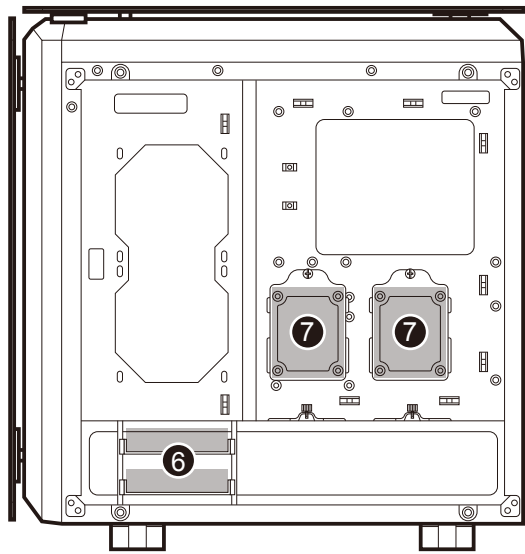
- 4面钢化玻璃侧盖
- 最多可安装5组水冷散热器与10个风扇
- 散热优良: 内建3个Vortex LED风扇, 每个风扇附有33颗LED灯!
- HDD/SSD扩充槽位于主机板后方: 不干扰气流运行!

#### تعليمات التركيب و الأمان:

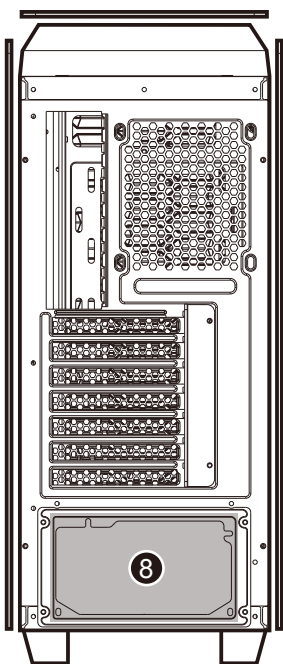
- عند التركيب أو التفكيك يجب التأكد من أن جميع الأسلاك منفصلة عن الكهرباء.
- يجب تركيب كل قطعة بحذر و بمكانها المناسب.
- يجب اتخاذ الاحترازاات اللازمة لمنع الصعق الكهربائي.
- من يقوم بعملية التركيب الشخص المختص فقط.



LEFT SIDE

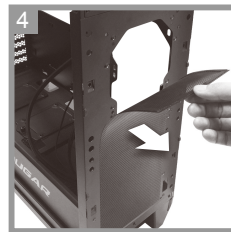
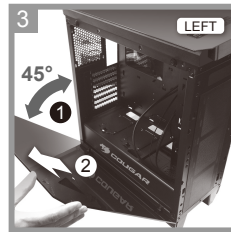
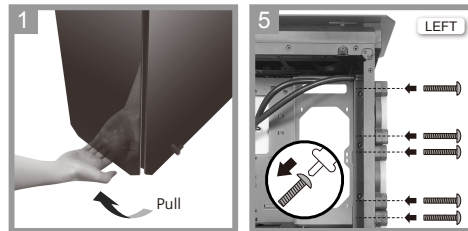


RIGHT SIDE

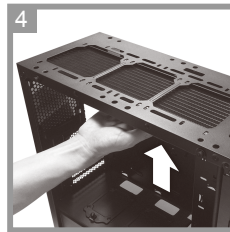
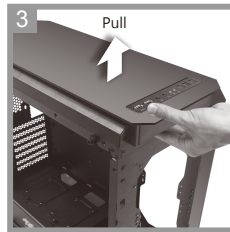
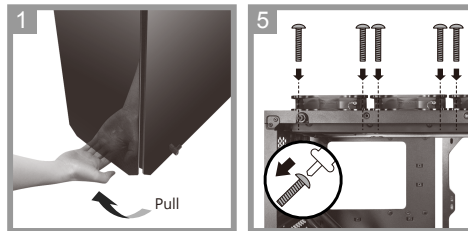


REAR SIDE

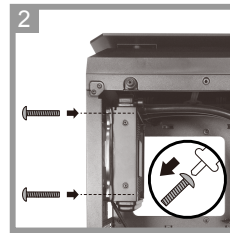
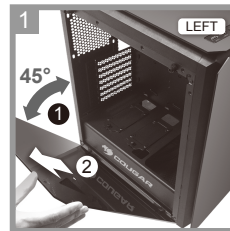
1 Installing a water cooler (front)



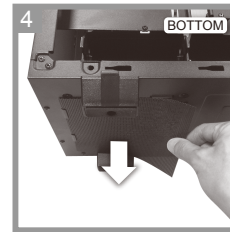
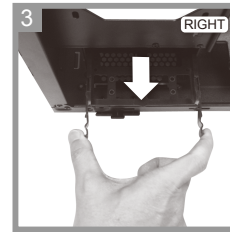
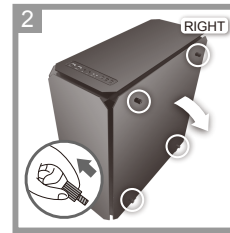
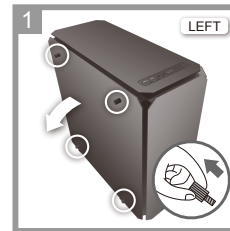
2 Installing a water cooler (top)



3 Installing a water cooler (Rear)

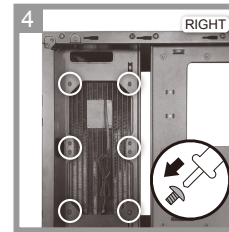
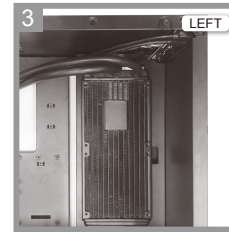
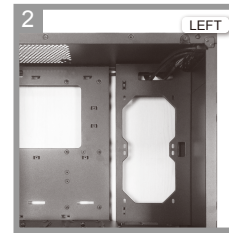
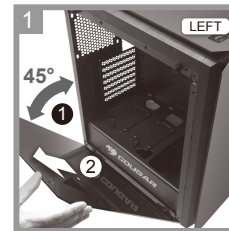


4 Installing a water cooler (Bottom)

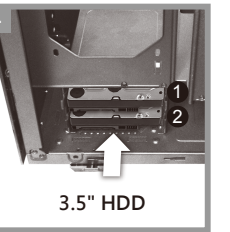
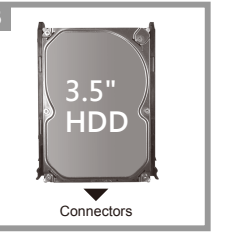
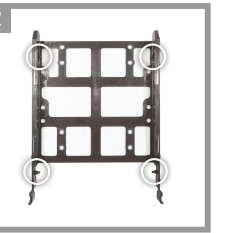
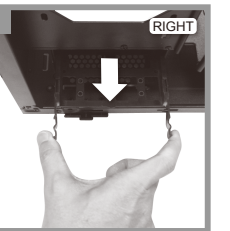


To install a fan or water cooler at the bottom of the case, please remove the 3.5" HDD cage.

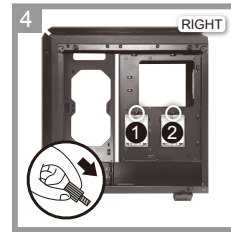
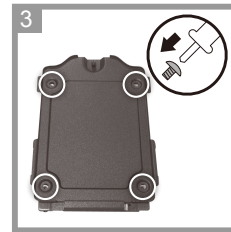
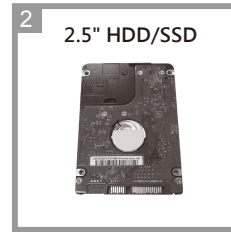
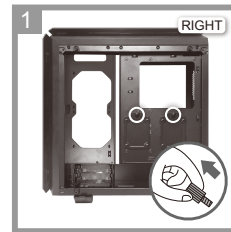
5 Installing a water cooler (Right Side)



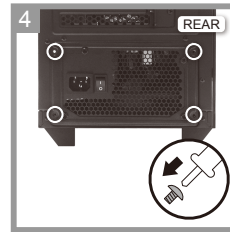
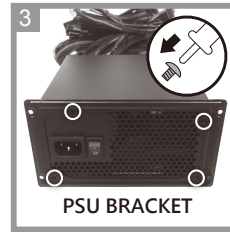
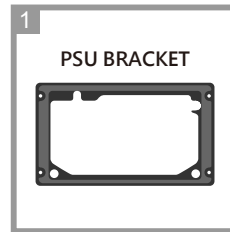
6 Installing an internal 3.5" HDD



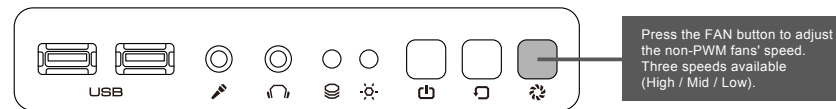
7 Installing an internal 2.5" HDD/SSD



8 Installing a power supply



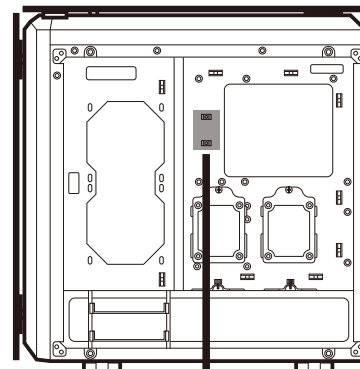
9 Fan control system



Press the FAN button to adjust the non-PWM fans' speed. Three speeds available (High / Mid / Low).

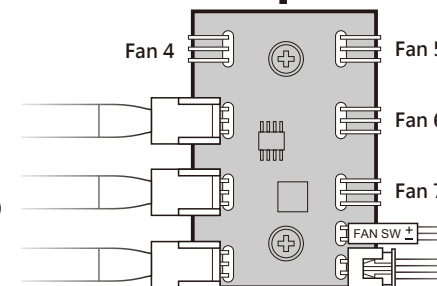


TOP



RIGHT SIDE

VORTEX LED Fans x 3 (pre-installed)



The included fan control board supports four additional fans (up to a total of seven).

Fan Controller  
Power Supply

ACCESSORY KIT

		Power supply screws	X 8
		Fans screws	X 24
		Motherboard / HDD screws	X 17
		SSD screws	X 24
		Stand-off	X 2
		Cable ties	X 4
		PSU bracket	X 1

COUGAR USA Technical Service  
Tel: (833) 256-3778  
Mail: rma@compucaseusa.com  
<https://cougargaming.com/support/contact/upload/>

For more information, please visit  
[www.cougargaming.com](http://www.cougargaming.com)  
Compucase Enterprise Co., Ltd.  
All rights reserved.

Compucase Enterprise Co., Ltd.  
No. 225, Lane 54, An Ho Road Sec. 2 Tainan, Taiwan, R.O.C  
Tel: +886-6-356-0606  
Service E-Mail: service@cougargaming.com

CE Made in China